

STAIRLOCK

New Designs | 2021

New Designs **2021**



STAIRLOCK

Stairlock has been undertaking a comprehensive new design development program. Over the past year we have explored many new design concepts in search of where the company will be headed in the future.

The following pages are examples of what can be done with some of the new baluster designs. These initial concepts were driven by process and materiality. We focused on the exploiting the capabilities of our 5 Axis CNC machines, pushing them to the limit with ambitious new forms. We also became obsessed with new metallic finishes such as copper which have now found their way into the collection.

This first edition is only the beginning.

Edward Lloyd, Managing Director



Process

Our new designs push the limits of our 5-Axis CNC machines with ambitious new geometries.





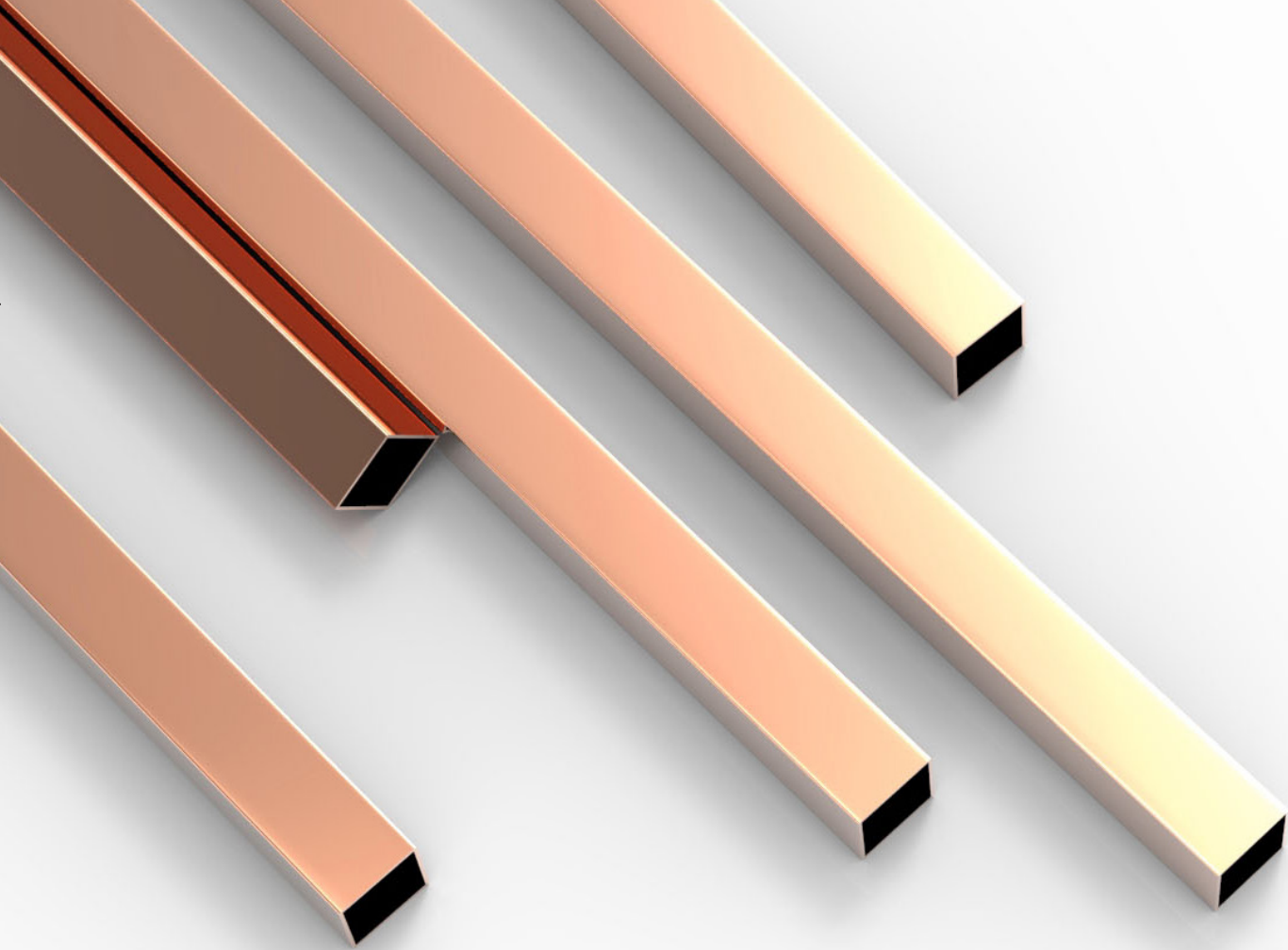


Copper

Our fascination with this semi-precious metal has led to the development of the new electroplated copper baluster.



'Brew' by Tom Dixon



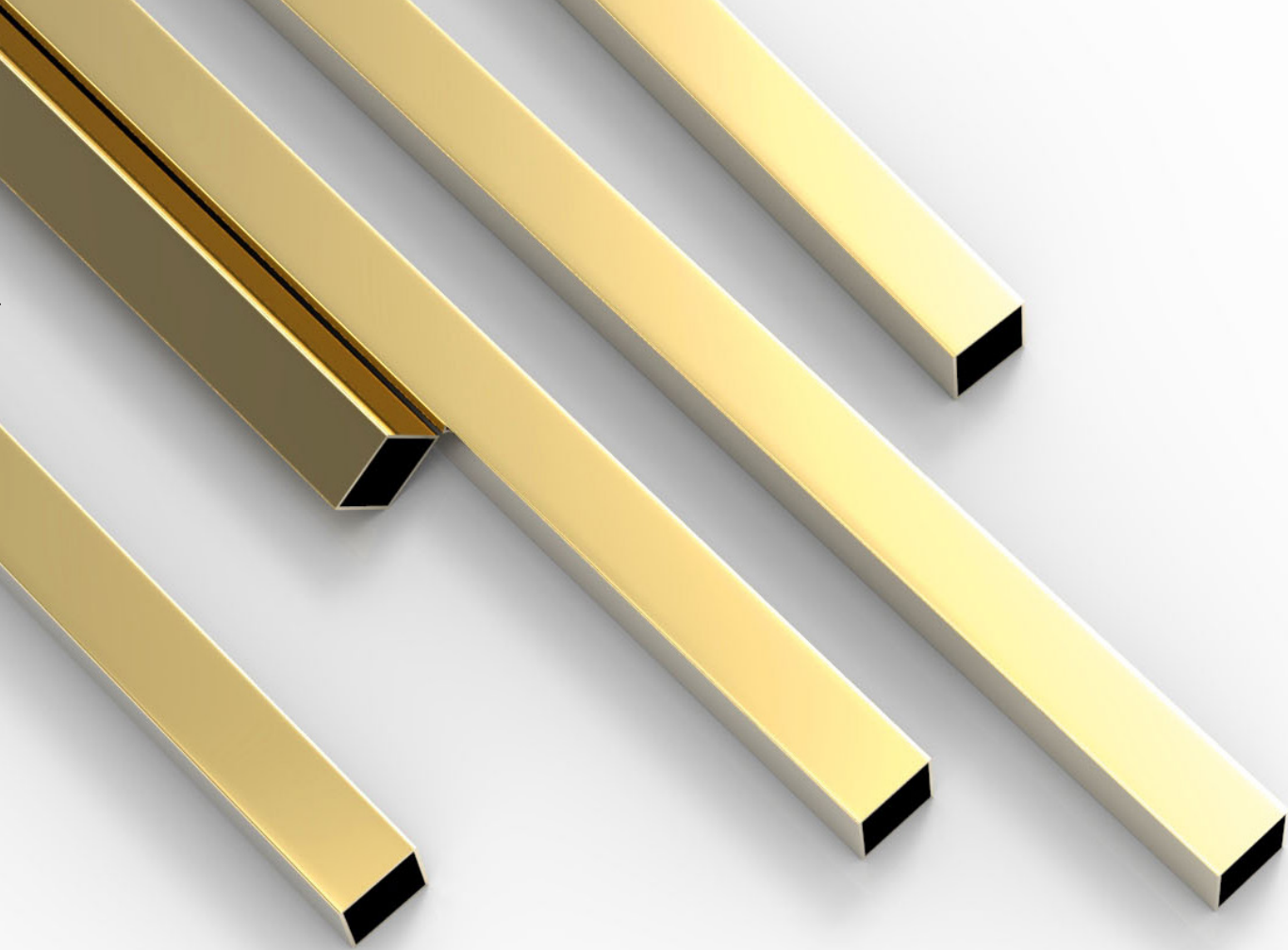


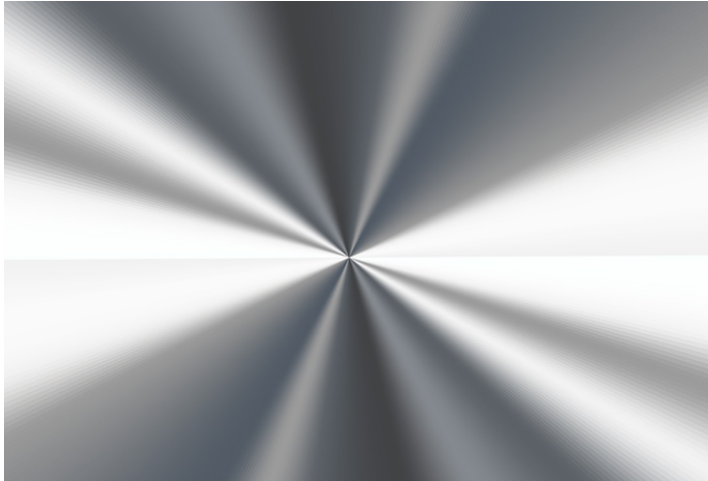
Brass

The versatility of brass make it an attractive material to work with and our new electroplated brass baluster is a testament to this.



'Form' by Tom Dixon



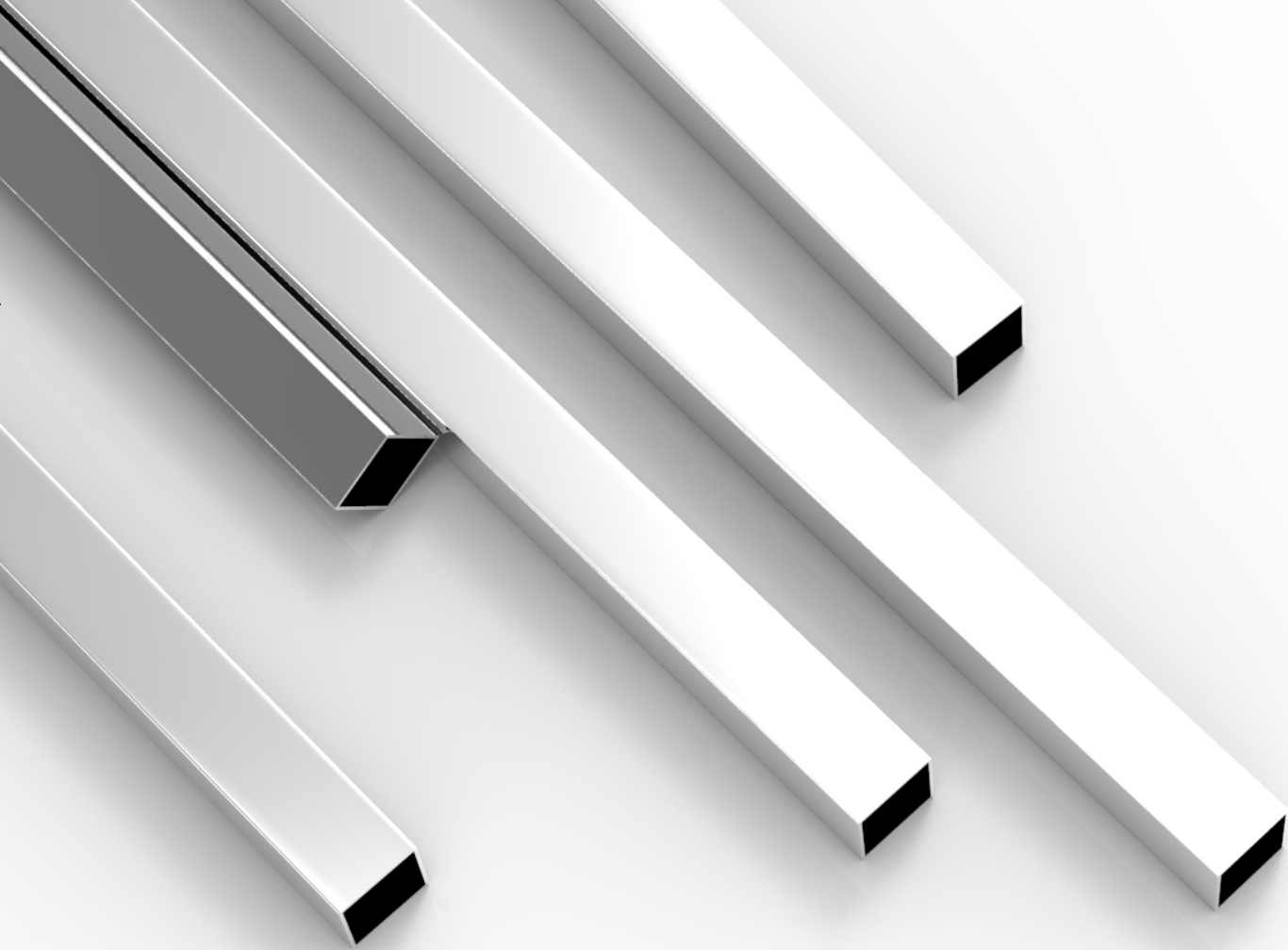


Chrome

An ancient metallic finish, chromium plating is durable but also has an unmistakable modern appeal.



'Melt' by Tom Dixon





STAIRLOCK

Riser: Closed
Baluster: Facet*
Post: Facet
Balustrade Material: Painted Pine

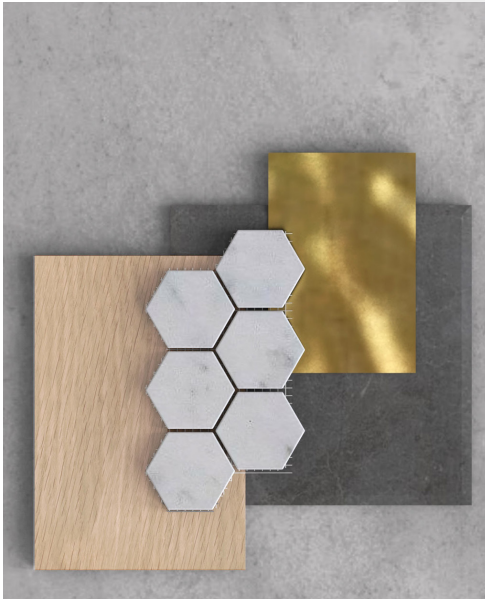


*Australian Registered Design 201717557. Feature bottom post only, additional posts are Square



STAIRLOCK

Riser: Closed
Baluster: Diamond*
Post: Diamond
Balustrade Material: American Oak

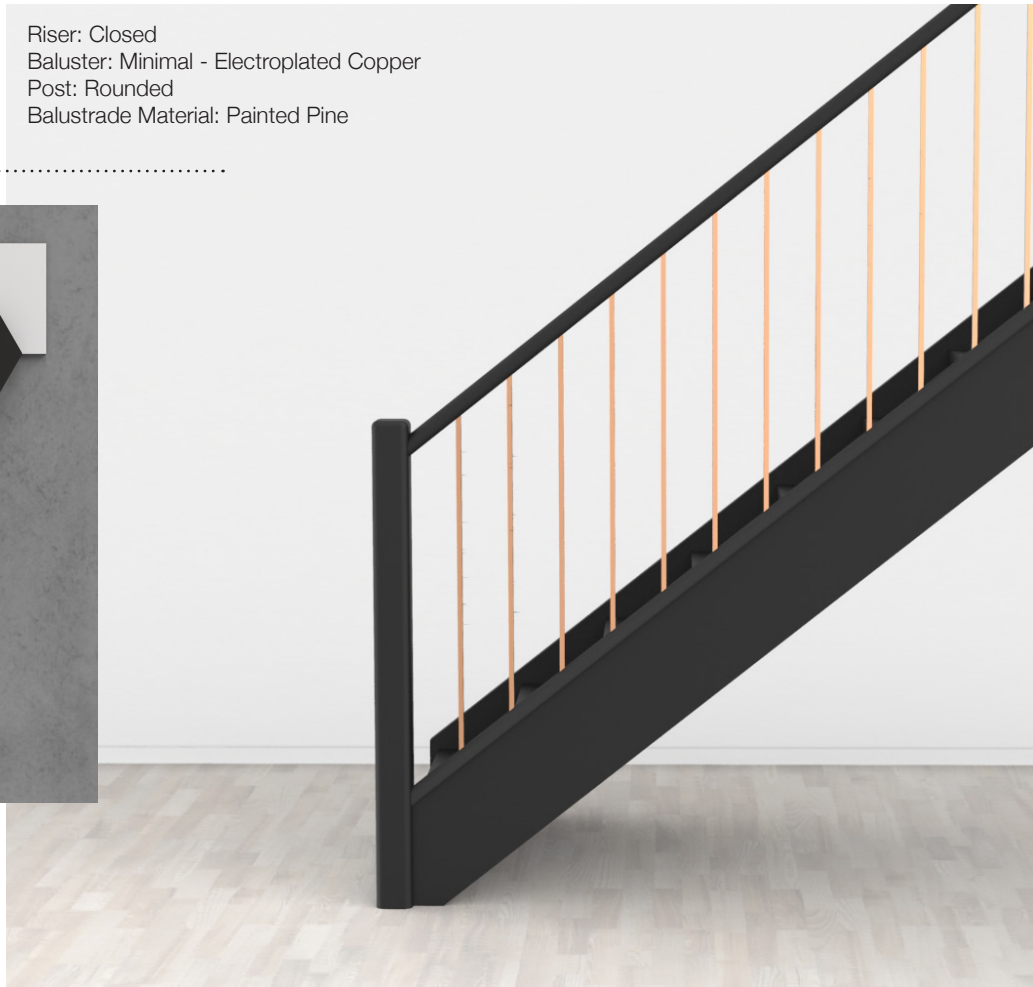


*Australian Registered Design 201717556. Feature bottom post only, additional posts are Square



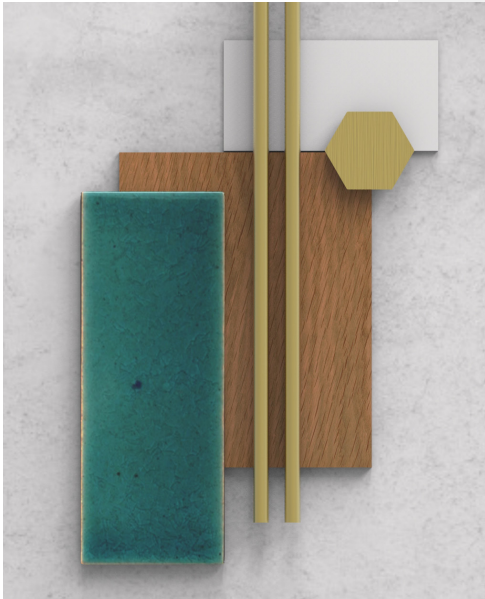
STAIRLOCK

Riser: Closed
Baluster: Minimal - Electroplated Copper
Post: Rounded
Balustrade Material: Painted Pine



STAIRLOCK

Riser: Open
Stringer: Cut
Baluster: Minimal - Electroplated Brass
Post: Square
Balustrade Material: Painted Pine



STAIRLOCK

Riser: Closed
Baluster: Minimal - Electroplated Chrome
Post: Rounded
Balustrade Material: Painted Pine





STAIRLOCK

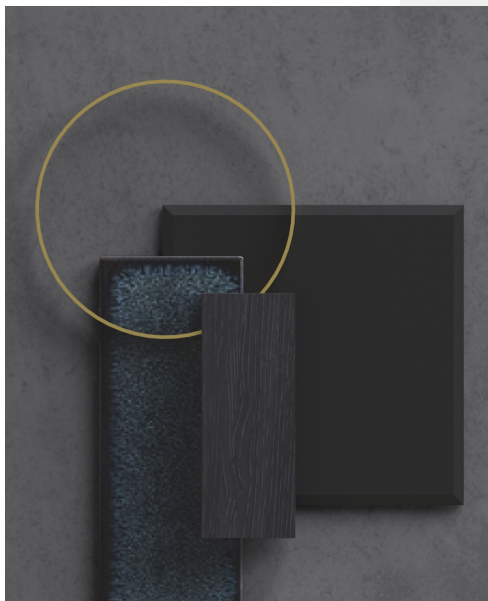
Riser: Open
Baluster: Minimal - Electroplated Copper
Post: Kizami*
Balustrade Material: American Oak



*Australian Registered Design 201815860. Feature bottom post only, additional posts are Square

STAIRLOCK

Riser: Closed
Baluster: Loop
Post: Square
Balustrade Material: Painted Pine



STAIRLOCK

Riser: Open
Stringer: Cut
Baluster: Loop
Post: Square
Balustrade Material: Painted Pine





STAIRLOCK

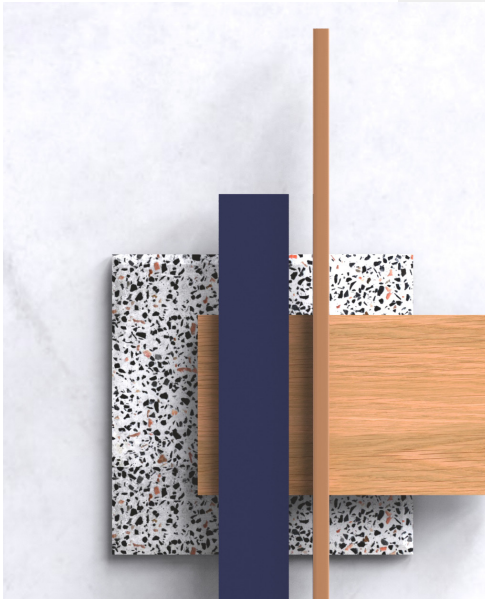
Riser: Closed
Baluster: Vetro
Post: Square
Balustrade Material: Painted Pine





STAIRLOCK

Riser: Closed
Baluster: Highline
Post: Highline*
Balustrade Material: Painted Pine



*Feature bottom post only, additional posts are Square



STAIRLOCK

Riser: Closed
Baluster: Minimal - Electroplated Brass
Post & Handrail: Streamline*
Balustrade Material: American Oak



*Australian Registered Design 201816300. Feature bottom post only, additional posts are Square



Streamline

Australian Registered Design 201816300



Kizami

Australian Registered Design 201815860

New Balustrades



Highline



Vetro



Facet

Australian Registered Design 201717557



Diamond

Australian Registered Design 201717556

New Balusters



Minimal



Loop



1



2



3



4



5



6

Newel Posts

Design Variations

1. Square
2. Bevelled
3. Chamfered
4. Rounded
5. Facet*
6. Diamond**

Dimensions

90 x 90mm cross section

Finishes



American Oak



Plantation Pine

*Australian Registered Design 201717557. Feature bottom post only, additional posts are Square

**Australian Registered Design 201717556. Feature bottom post only, additional posts are Square



1



2



3



4

Balusters Timber

Design Variations

1. Square
2. Chamfered
3. Facet*
4. Diamond**

Dimensions

32 x 32mm cross section

Finishes



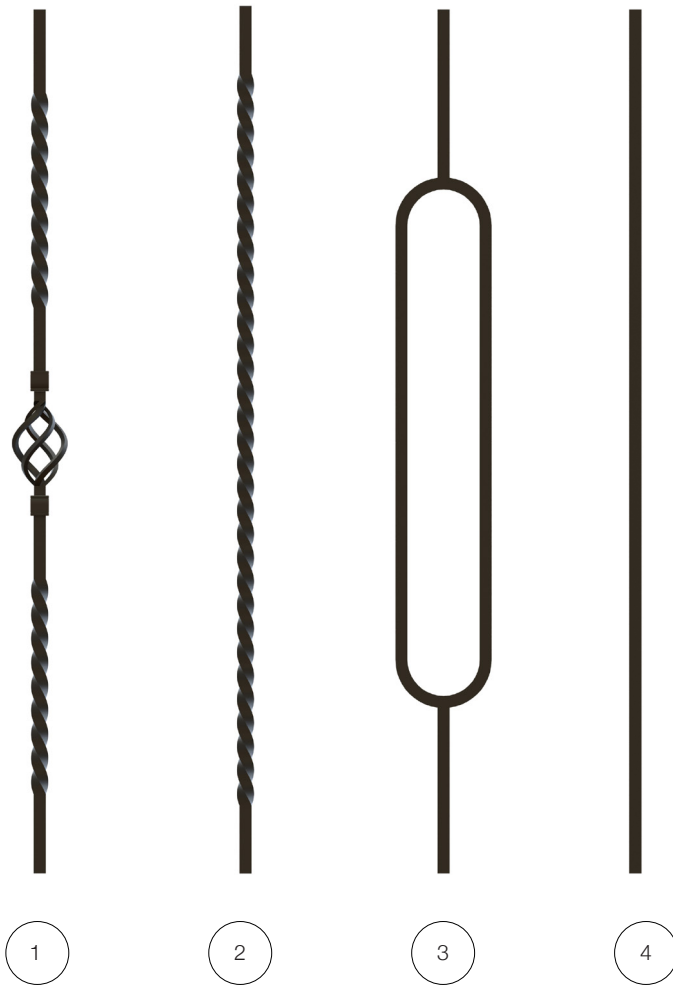
American Oak



Plantation Pine

*Australian Registered Design 201717557

**Australian Registered Design 201717556



Balusters Metal

Design Variations

1. Basket
2. Twist
3. Loop
4. Minimal

Dimensions

12 x 12mm cross section

Finishes



Matt Black



Balusters Minimal

Dimensions

12 x 12mm cross section

Finishes



Electroplated Chrome



Gun Metal Grey



Electroplated Brass



Matt Black



Electroplated Copper



Gloss Pink



Stainless Steel

Handrails Steel



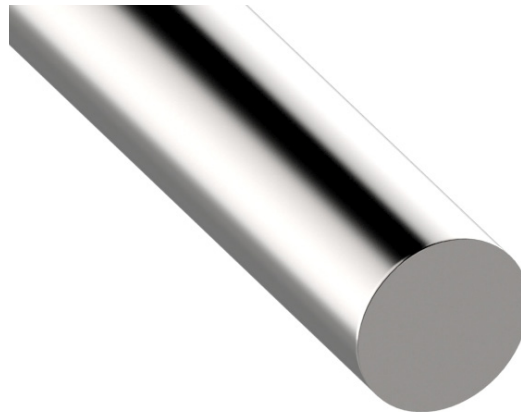
Rectangle

Dimensions
50 x 25mm cross section

Finishes



Stainless Steel



Round

Dimensions
Ø 50mm cross section

Finishes



Stainless Steel



Oval

Dimensions
65 x 42mm cross section

Finishes



American Oak



Finger Jointed Pine



Rectangle

Dimensions
65 x 42mm cross section

Finishes



Vic Ash



Maple



Spotted Gum



Black Butt



Merbau



Round

Dimensions
Ø 50mm cross section

Finishes



American Oak

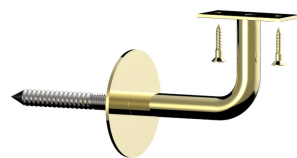
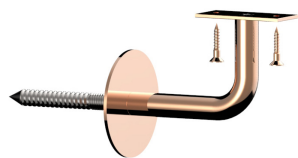


Finger Jointed Pine

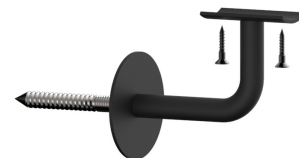
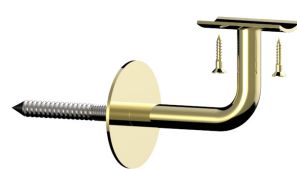
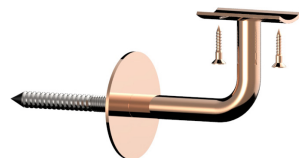
Handrails Timber



1



2



Wall Rail Brackets

Design Variations

1. Flat Plate
2. Curved Plate

Finishes



Zinc



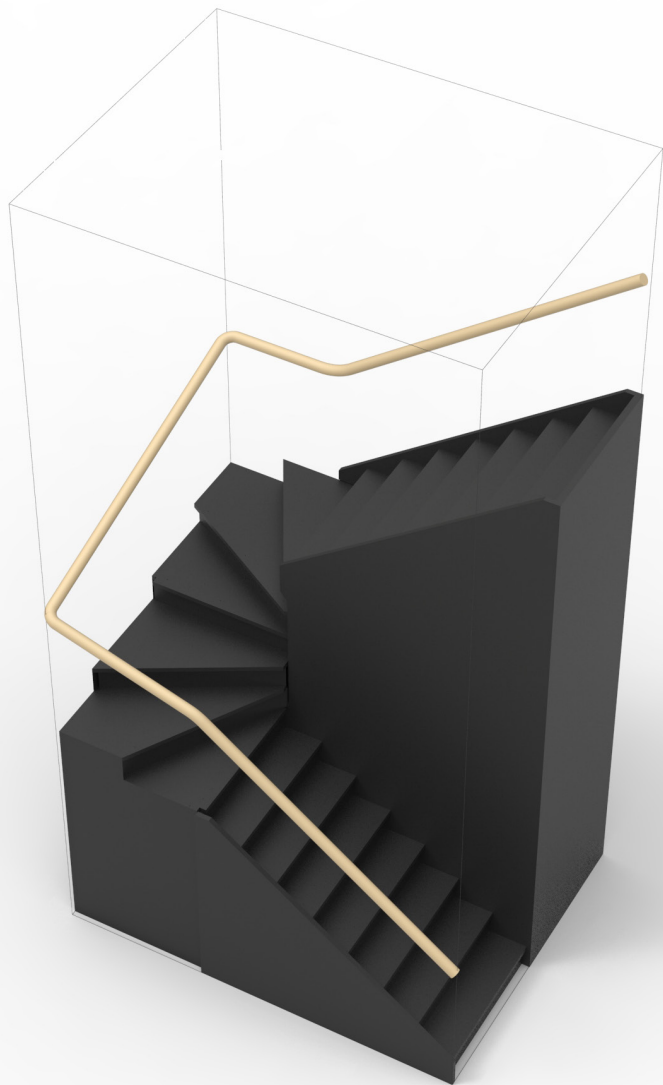
Electroplated Copper



Electroplated Brass



Matt Black



Onerail™ System*

Dimensions

Ø 50mm cross section - Continuous Wall Rail

Finishes



American Oak



Finger Jointed Pine

Treads



Timber

Nosing - Pencil Round

Thickness
28mm (American Oak only)
32, 42 or 65mm

Finishes



American Oak Substrate



Spotted Gum



Vic Ash



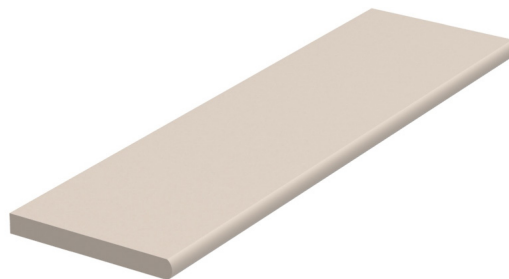
Black Butt



Maple



Merbau



MDF

Nosing - Full Round

Thickness
25 or 32mm

Finishes



MDF



Closed Riser



Cut Stringer



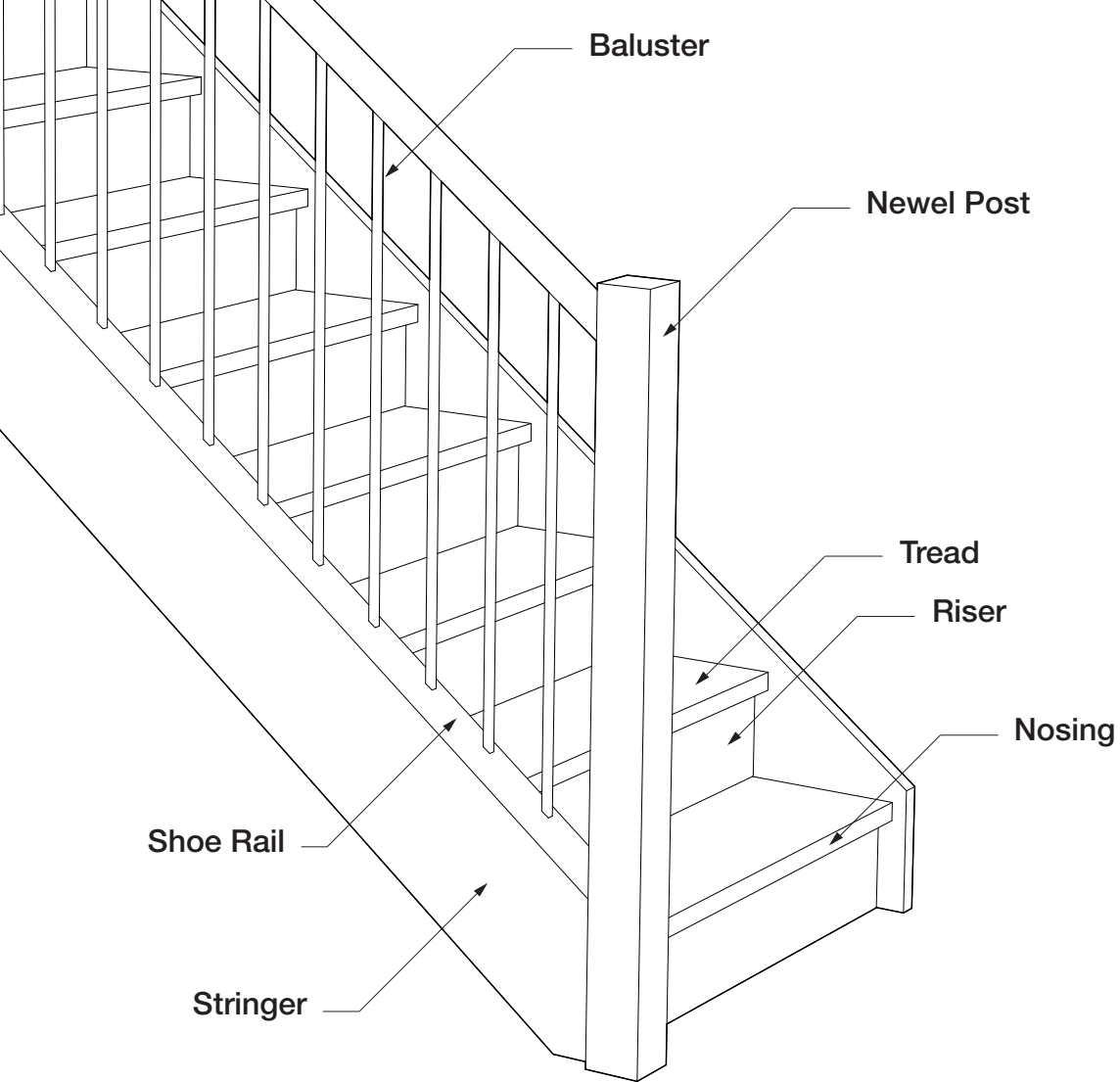
Open Riser



Mono Stringer

Stair Types

Staircase Anatomy



Contact Us

General Enquiries

Free Call: 1800 088 219

Head Office:

180 Philip Highway, Elizabeth South, SA 5112

Phone: (08) 8255 6188

Facsimile: (08) 8132 1248

Post: PO Box 1016, Elizabeth Vale, SA 5112

Website:

www.stairlock.com.au

South Australia

SAsales@stairlock.com.au

08 8255 6188

Queensland

QLDsales@stairlock.com.au

07 3209 4911

Victoria

VICsales@stairlock.com.au

03 8761 6777

New South Wales

NSWsales@stairlock.com.au

02 96721111

STAIRLOCK

